



# KPAX goes further with HP SDS integration

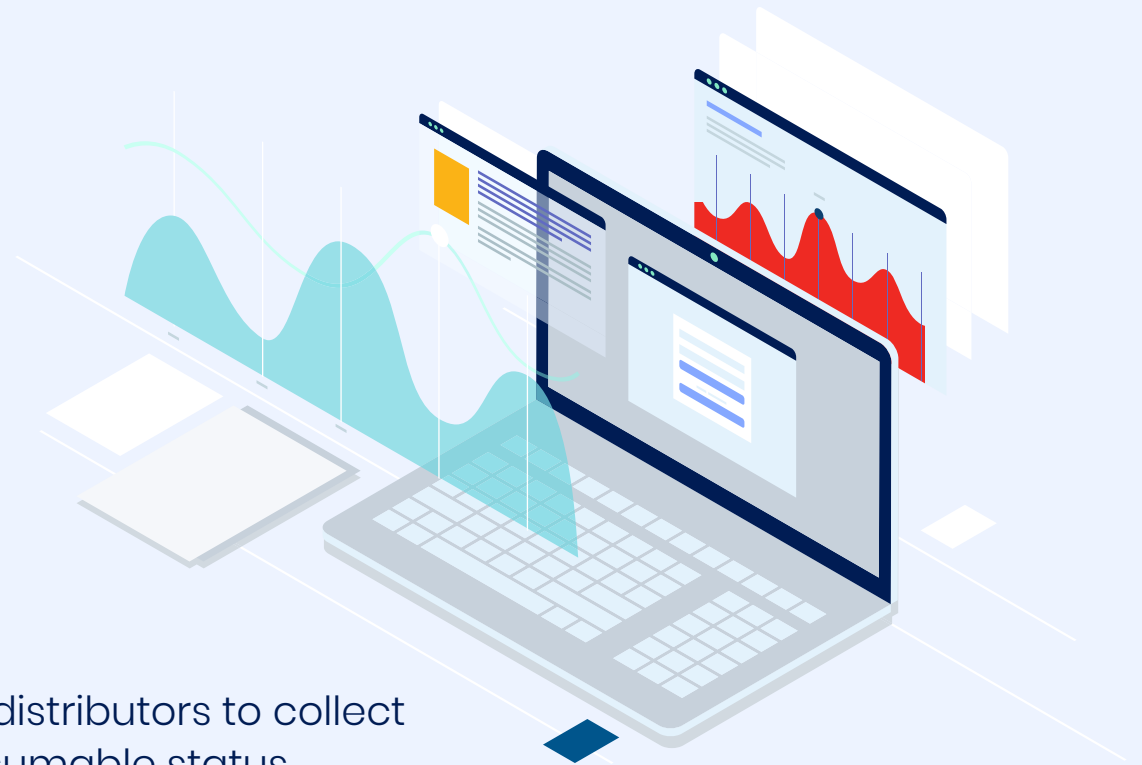




# **THE KPAX SOLUTION**

**KPAX** is a centralised printer fleet management solution. This solution works regardless of the manufacturer and is essential for the implantation of MPS services.

From a central console, it enables distributors to collect data such as meter readings, consumable status, breakdowns and failure notifications.





## Cost transparency

In a cost-per-page billing model, the automatic meter reading of printers and copiers can save a lot of time and energy. The user no longer needs to read their meter manually and can focus on their tasks. The automatic meter reading guarantees the provision of timely information and cost transparency. As a result, it reduces the risk of error.



## Supply management

Simple and efficient management of consumables.

**No more stock shortage:**  
downtime risk is reduced

**No more surplus :**  
significant cost savings

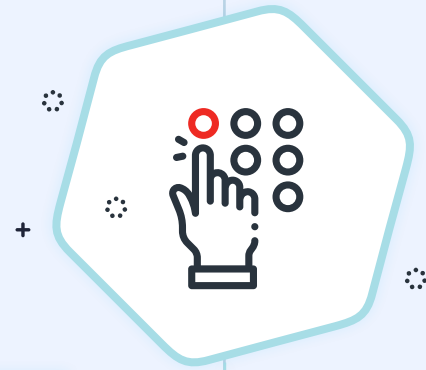
For optimal management of stocks, the automatic delivery of consumables starts from a certain stock level or an amount of time remaining.



## Know your fleet to make the right decisions

Having a management report printer fleet allows for actions based on factual information.

**The Key Performance Indicator (KPI) enables the distributor to make the right decisions :**  
checking actual use of copy or colour, identifying under or over-used equipment, replacing or removing devices.



### **Several brands, one solution**

In order to respond to the real needs of distributors, KPAX offers a scalable and flexible solution for printer fleet management, regardless of the manufacturer. KPAX allows for optimal management to achieve maximum efficiency and profitability.



### **Quick and easy installation**

In order to simplify the customer experience, KPAX has opted for very simple deployment. In just four steps, the data collection monitor can begin to operate on the customer's premises. A user guide, downloadable by email, describes this process step by step. Fast installation, without any IT intervention!



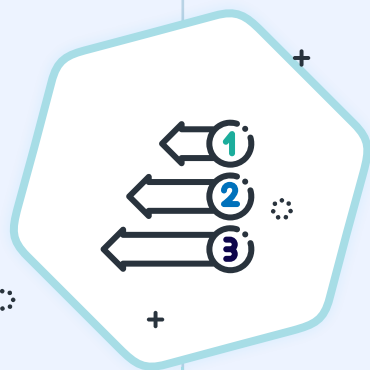
## **Liberty, the hardware alternative to the software data collector agent**

Liberty is a hardware agent. Once connected to the customer network it allows for the collection of device data which it then transmits to the KPAX server (SaaS or OnSite).

This self-contained electronic box avoids the need for installing any software in the customer's infrastructure.

With Liberty we wanted to simplify the collection of printer fleet data. This unique technology, developed by Bluemega, simplifies implantation and agent management even in a difficult customer environment (no server, no control over workstations, low IT skills, Mac environment...). In certain circumstances, the time spent by the technician can also be very expensive (to reinstall, reactivate, format or uninstall...).

*HP SDS features are not available through Liberty*



## Automatic meter reading

The KPAX solution includes automatic meter reading with all the necessary billing details. For simplicity, it can be integrated into the company's ERP. All information is transmitted to the distributor without any need for prior notification, either on their part or on the customer's part. A substantial gain in time, money and energy.



## Consumable management

In order to avoid any potential equipment downtime and any excessive storage, KPAX provides an automatic delivery service. A fully computerised consumable management service for maximum customer satisfaction.



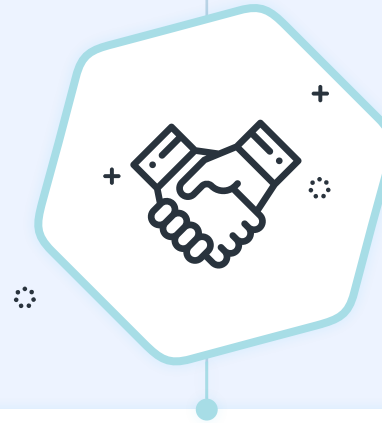
## Remote Diagnosis

The KPAX solution transmits the alerts and any messages on equipment screens to the central server. The distributor is constantly informed, can identify defects and is able to take specific actions.



## **Simplified data collection**

KPAX aims to minimize technician intervention. A lot of actions can now be made without dispatching a technician: changing IP addresses, data collection planning or its technical configuration. The Liberty hardware agent makes it possible to go even further in the simplification of deployment and administration of the KPAX service. It is managed discreetly and in full transparency.



## **Automated Reports**

KPAX offers periodic analytical reports. Every day, week or month you will have access to: meters for billing, the status of consumables (toner and wear parts), the list of new devices, the list of discontinued agents and more. The data contained in the reports can be filtered and easily configured.





## Personalised access

The impressive user rights matrix allows distributors to provide specific permissions to their stakeholders based on their specific role or job. It also enables the creation of on-demand permissions for the end users, providing them with full visibility and control of their printing fleet.



## Security

KPAX devotes significant attention to enabling safe use of its device in order to guarantee its customers' security. This is why all data is encoded.



## A scalable solution

KPAX aims to develop its technology to adapt it to the needs of distributors and customers. A scalable evolution in the making to provide an increasingly effective and precise service.

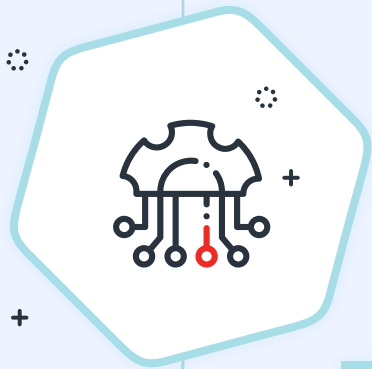
# **KPAX AND HP SDS INTEGRATION : FLEET MANAGEMENT KICKS UP A GEAR**



**KPAX** integrates the **HP Smart Device** Services technology.

This technology provides access to advanced functions. From the KPAX interface you have access to remote management and administration services on HP devices compatible with HP SDS technology.





## HP SDS technology integration

KPAX has been chosen by HP and is now fully integrated with the brand-new HP Smart Device Services (SDS) technology. The cloud-based HP SDS technology promises to considerably reduce service costs, to avoid equipment downtime and to offer an exceptional quality of service to the customer.



## Easy integration

The KPAX solution will integrate easily with HP SDS technology. No new equipment to buy, no new software to install and no costly IT investment. In a few clicks you will enjoy the power of HP SDS technology through KPAX. The KPAX agent will install the HP SDS collector discreetly, remotely and on demand.



## Diagnosis before IT intervention

With the access to status and error messages in real time, the help desk can make a precise diagnosis. The technician arrives on the customer's premises with the required parts and knows how to proceed. A quick and efficient service which saves time and money.



### **On demand training**

Depending on the diagnosis, the technician has access to specific tutorials. Thanks to KPAX and HP SDS, interventions are now even more rapid and precise. Equipment downtime is dramatically reduced, and you can build a trusting relationship with your customers.



### **Remote breakdown service**

With HP SDS and KPAX the help desk receives detailed HP device information and can control it remotely. From device history to maintenance service recommendations and more, the technician has all the necessary tools to anticipate any breakdowns and to fix them remotely.

For instance, the device can be rebooted or updated remotely which significantly reduces maintenance time.



## **Consumable management**

One of the major issues for printer fleet management is cost reduction. Managing consumables is therefore essential. The HP SDS technology combined with the KPAX solution, enables you to turn off or postpone the “low toner” alerts. It reduces the likelihood of the customer replacing the cartridge before it’s really necessary. Besides cutting costs, it commits distributors and customers to a more ecological approach.



## **Productivity and efficiency**

KPAX integrated with HP SDS provides increased productivity and greater services. Maximizing equipment uptime, optimising tech service and reducing the cost of an effective and cost-efficient printer fleet!



**Please contact us**  
**to find out more about integrating HP SDS into KPAX**

[www.bluemega.com/kpax-manage/](http://www.bluemega.com/kpax-manage/)